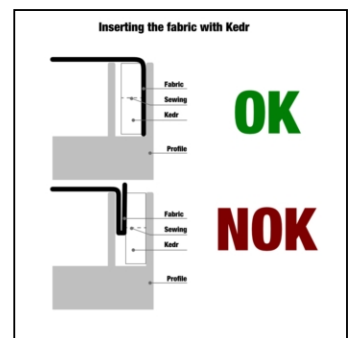
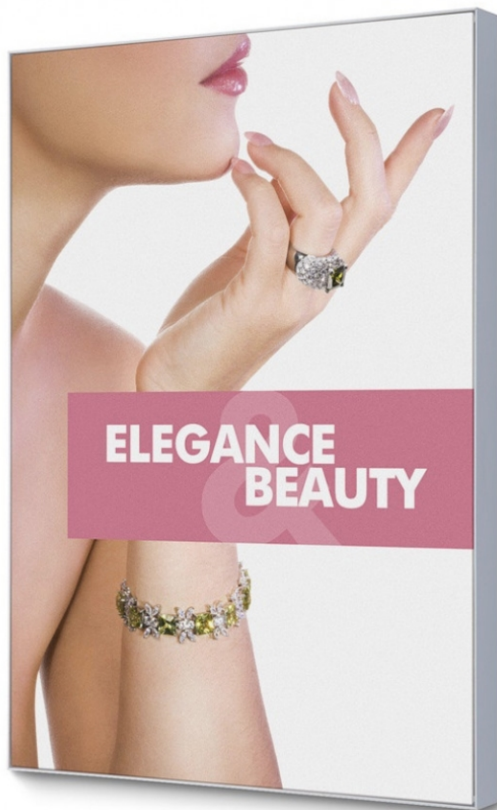


PRODUCT SHEET

Textile Frame Wall Model LED A1

TFR75WA1LED

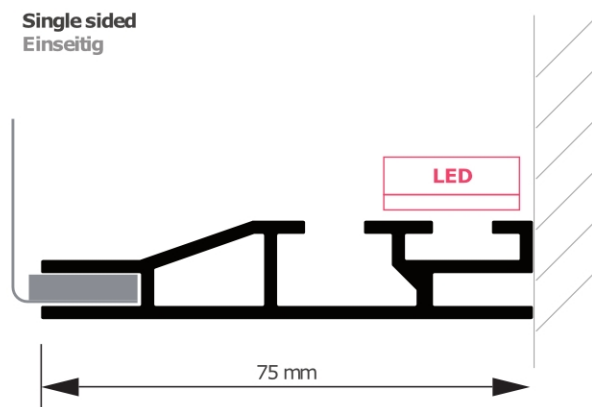
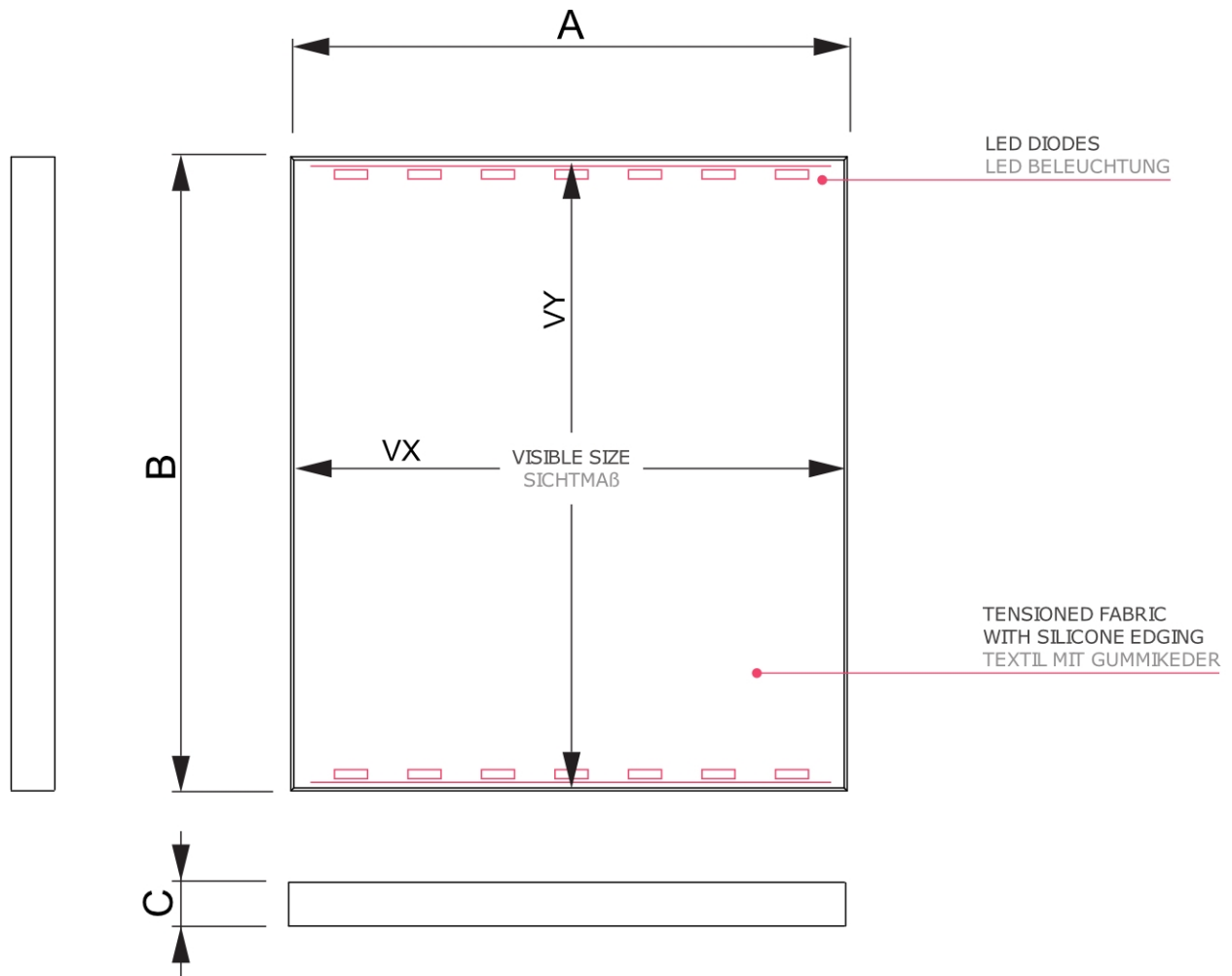


- 30 mm is the thinnest and lightest available profile without LED
- LED version contains Fresnel LED lenses that are pre-mounted at inner side of the profile
- Very easy attachment to the wall with direct mounting holes (Non-LED) or steel wall mounts (with LED)

PRODUCT SHEET

Textile Frame Wall Model LED A1

TFR75WA1LED



PRODUCT SHEET

Textile Frame Wall Model LED A1

TFR75WA1LED

GENERAL INFO

SKU	Sizes (mm) (A x B x C)	Format (mm)	Visible size (mm) (VXxVY)	Hole spacing (mm) (XxY)
TFR75WA1LED	594 x 841 x 75	A1 (594 x 841 mm)	587 x 834 mm	-
Orientation	Weight (kg)			
Vertical	4,00			

ELECTRICAL INFORMATION

Illumination	Lighting colour (K)	Luminosity (cd)	Light intensity (lx)	Wattage (W)
Yes	-	-	-	36 W

MONITOR SPECIFICATIONS

Monitor type	LCD Size	Ratio	Resolution (px)	Contrast	Monitor dimensions (mm) (WxHxD)
-	-	-	-	-	-
Response Time (ms)	Nit (nt)	Operating time	Operating system	Touch monitor	Touch foil
-	-	-	-	No	No
Wattage (W)					
36 W					

PACKAGING INFORMATION

Packaging unit 1 (mm)	Packaging unit 2 (mm)	Packaging unit 3 (mm)
1080 x 95 x 95	-	-
Palette number of pieces	Palette weight (kg)	Palette type
-	-	-

ADDITIONAL INFORMATION

Product certifications	EAN
No	8596052122989